

Cibolo Parkway Project

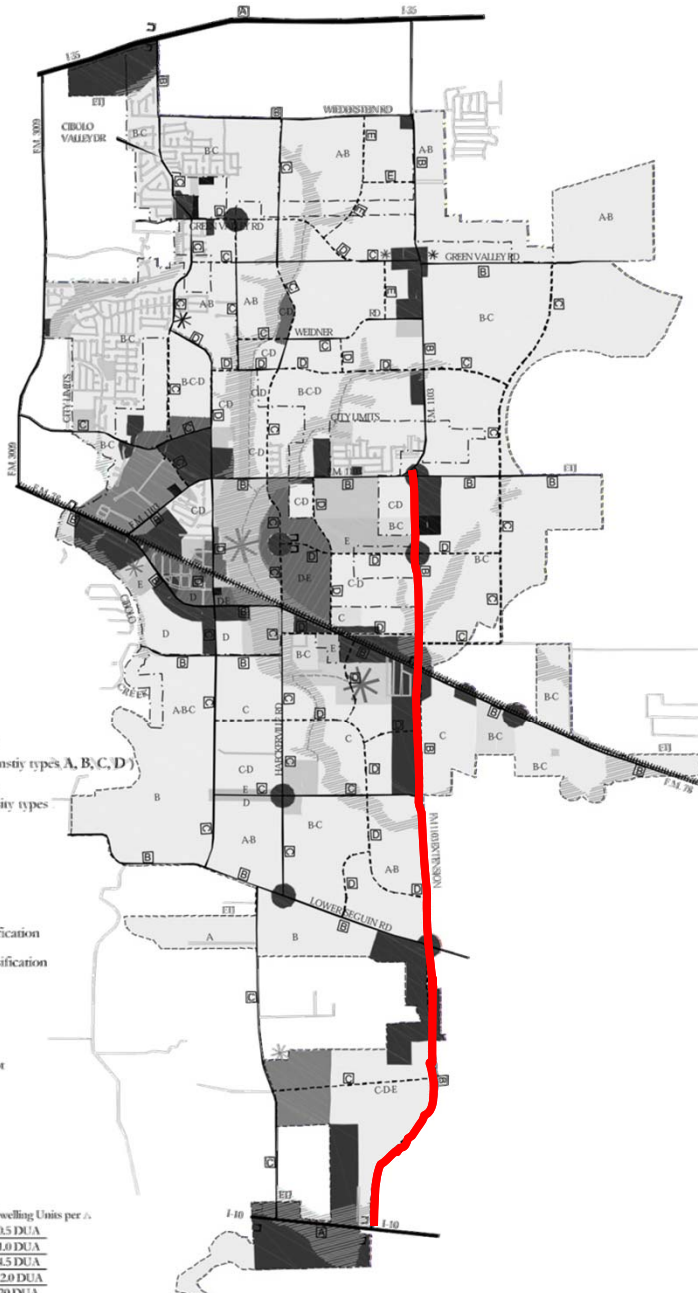
CIBOLO CITY COUNCIL
PUBLIC HEARING

AUGUST 23, 2016



The extension of FM 1103 to SH 78 and continuing on to IH 10 has been on the City's Master Plan since 2005.





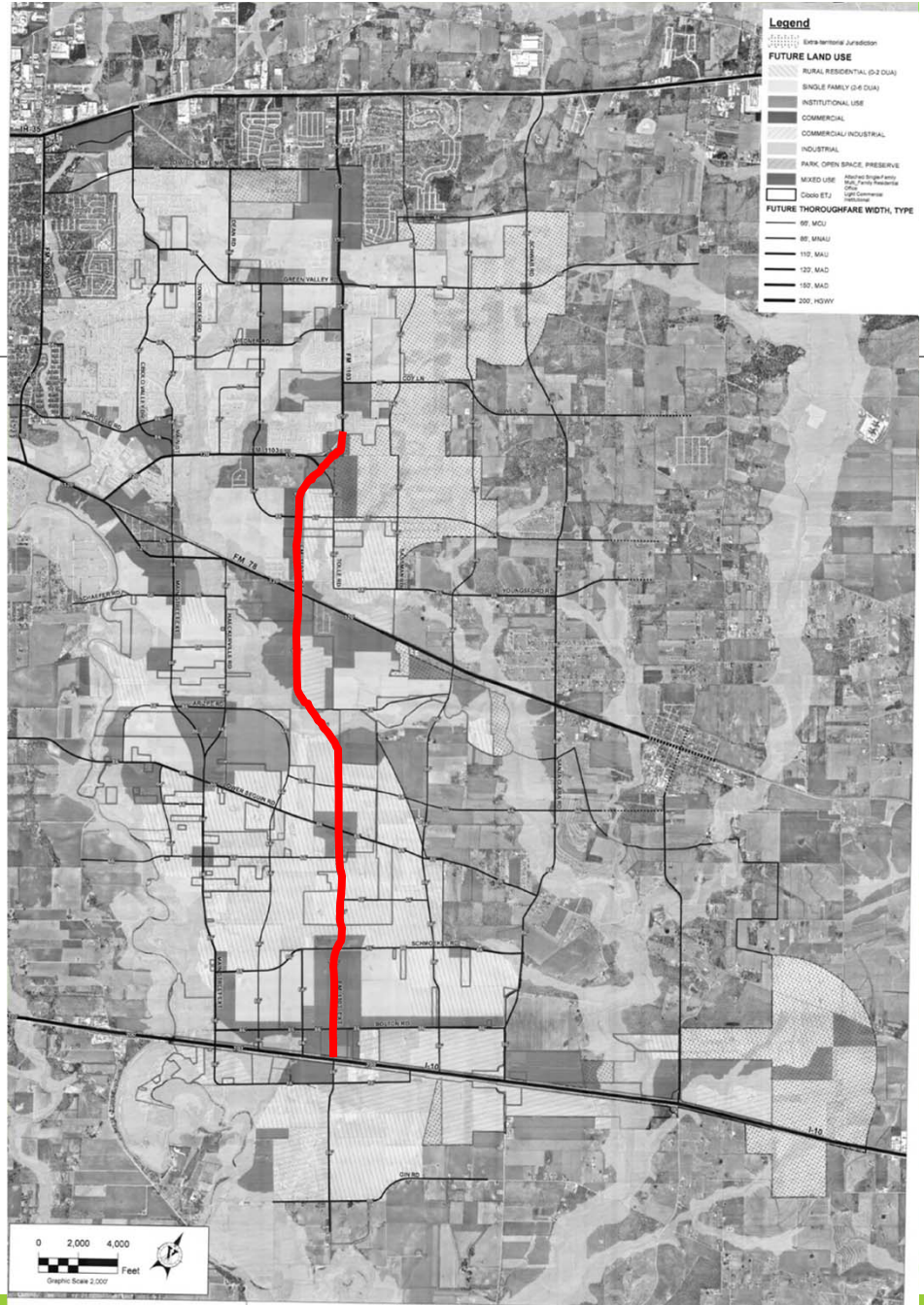
LEGEND

- City Limits
- Park, Recreation, Open Space
- Single Family Residential (Density types A, B, C, D)
- Multifamily (Density type E)
- Manufactured Housing (Density types A, B, C, D)
- Public / Civic Use
- Institutional Use
- CBD Mixed and Historical
- Commercial
- Industrial
- Existing Major Road & Classification
- Proposed Major Road & Classification
- Proposed Park Trail
- Neighborhood Park Feature
- Regional Park Feature
- Community Gateway
- Commuter/Tourist Rail Depot
- Public Utility Site
- Future Fire / EMS Facility
- Airfield
- 100-Year Floodplain

Density Type	Character	Maximum Dwelling Units per Acre
Type A	Rural	0.5 DU/A
Type B	Semi-Rural	1.0 DU/A
Type C	Urban	4.5 DU/A
Type D	High Density	12.0 DU/A
Type E	Multiple Family	20 DU/A

Roadway Classification	Description
A	Freeway
B	Primary Arterial
C	Secondary Arterial
D	Major Collector
E	Minor Collector

**City of Cibolo Master Plan
Future Land Use Map (January 2005)**



Legend

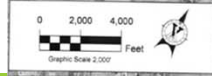
Extra-territorial Jurisdiction

FUTURE LAND USE

- RURAL RESIDENTIAL (0-2 DU/A)
- SINGLE FAMILY (3-6 DU/A)
- INSTITUTIONAL USE
- COMMERCIAL
- COMMERCIAL/INDUSTRIAL
- INDUSTRIAL
- PARK, OPEN SPACE, PRESERVE
- MIXED USE
- CDMS ETJ

FUTURE THOROUGHFARE WIDTH, TYPE

- 90' MAU
- 80' MAU
- 110' MAU
- 120' MAD
- 150' MAD
- 200' HWY



FUTURE LAND USE AND THOROUGHFARE MAP
CITY OF CIBOLO, TEXAS

A comprehensive plan shall not constitute zoning regulations or establish zoning district boundaries.

ADOPTED JULY 28, 2015

This is to certify this map as the Official Future Land Use Map
Future Thoroughfare Map adopted on 07-28-2015 by the
City Council of the City of Cibolo, Texas

[Signature]
Mayor

[Signature]
City Clerk



On March 8, 2016, the Cibolo City Council passed a resolution creating a Blue Ribbon Committee to study and pursue the feasibility of extending FM 1103 from the proximity of Wagon Wheel Way to IH10.



On May 19, 2016, the Blue Ribbon Committee voted unanimously to recommend that the Cibolo City Council pursue the feasibility of building the Cibolo Parkway with the Texas Turnpike Corporation.

This effort will allow the City to accomplish and obtain a long standing goal of its Comprehensive Master Plan and Transportation Thoroughfare Plan.



On August 17, 2016, the Cibolo Economic Development Corporation Board of Directors voted to recommend the Cibolo City Council pursue a detailed feasibility and economic impact study to determine the viability of the proposed Cibolo Parkway.



The need to address and improve mobility within the City of Cibolo continues to be a prime goal of the City Council, its citizens, and its City Administration.

For over a decade, the FM 1103 extension has and will continue to be a primary concern for Cibolo in the mitigation and support of: emergency response, public transportation, and the general circulation locally to regionally.

The proposal as submitted by the Texas Turnpike Corporation reduces or eliminates financial risk to the City and allows for a much needed north to south thoroughfare to be constructed and opened within five years.



Introduce:
John Crew,
President and CEO - Public Werks, Inc.

